



# CHAMBER ENGINE SILENCERS

**E12,E13,E14,E15**

Stoddard Silencers, Inc.  
 1017 Progress Drive, Grayslake IL, 60030  
 Tel: (847) 223-8636 fax: (847) 223-8638  
 Web Page: [www.stoddardsilencersinc.com](http://www.stoddardsilencersinc.com)

Engine division: [www.stoddardenginesilencers.com](http://www.stoddardenginesilencers.com)

## Application

The E series chambered silencers are design for various applications where the attenuation of the silencer is selected by the customer. The chamber silencers may also be installed on turbocharged engines. Specific noise problems or applications should be discussed with factory personnel.

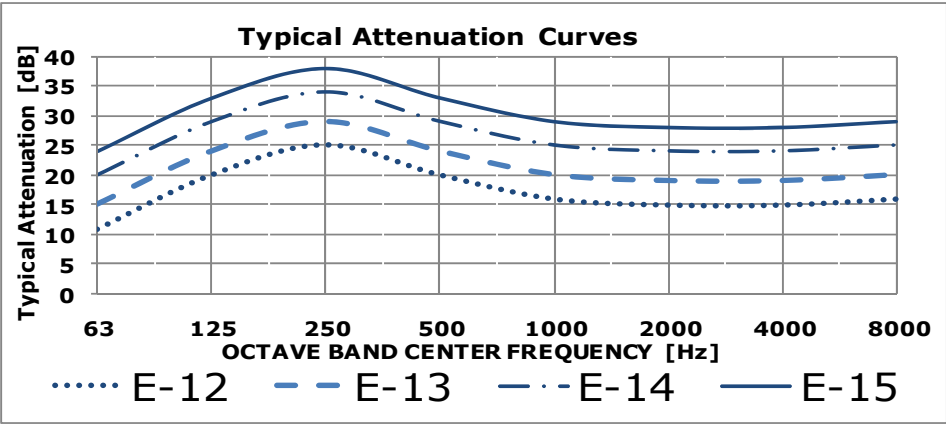
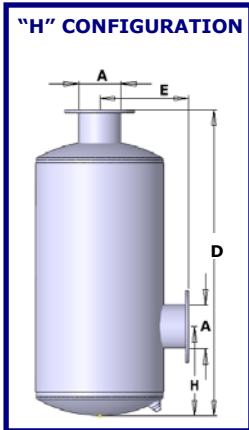
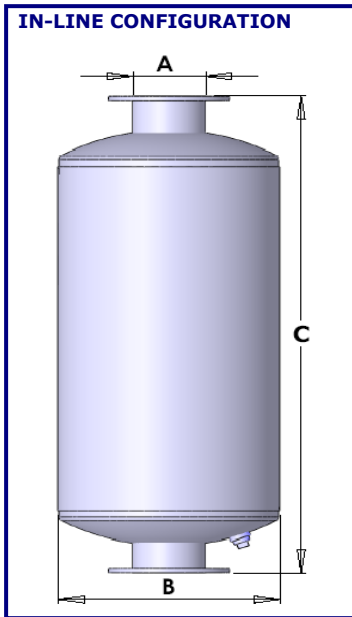
## Design

A multi-chambered silencer containing a special arrangement of volumes and air passageways to effectively reduce pulsations through the conversion of noise energy into heat. May be installed in horizontal or vertical position.

Individual dimensional drawings are available on request.

## Construction

All-welded steel construction for long service life. Exterior painted with high quality black heat resistant coating. Withstands temperatures up to 1200°F. Flanges drilled to match 125 Ib. American Standard Flanges.



TL [dba]= [17-23] [22-28] [27-33] [31-37]

MODEL	E12					E13					E14					E15				
A size	B Dia	C OAL	D OAL	E OAL	H MIN	B Dia	C OAL	D OAL	E OAL	H MIN	B Dia	C OAL	D OAL	E OAL	H MIN	B Dia	C OAL	D OAL	E OAL	H MIN
4	12	33	31	11	6	12	45	43	9	6	14	53	50	10	7	14	68	65	10	8
5	12	44	42	12	7	12	56	53	9	6	16	65	62	11	7	16	71	68	11	9
6	14	44	42	13	8	14	56	54	10	7	18	72	69	12	8	18	85	82	12	10
8	18	59	57	15	9	18	71	69	12	9	22	86	83	14	8	22	111	107	14	13
10	22	72	70	17	11	22	84	82	14	10	26	98	95	16	14	26	136	132	16	14
12	26	73	71	19	12	26	85	83	16	12	36	126	123	21	18	36	100	96	21	18
14	30	80	78	22	14	30	98	96	18	13	36	138	135	21	19	36	138	134	21	20
16	36	100	98	22	15	36	118	116	21	16	42	150	150	24	21	42	127	123	24	21
18											48	166	166	27	24	48	193	189	27	24
20											54	177	177	30	26	54	165	161	30	26
22											60	193	193	33	29	60	179	175	33	29
24											60	204	204	33	30	60	226	222	33	32

SPECIAL CONFIGURATIONS AVAILABLE UPON REQUEST

Dimensions are in inches

Larger sizes available upon request.  
 We specialize in custom design silencers.

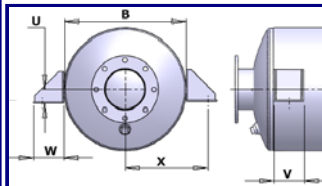


# ACCESSORIES

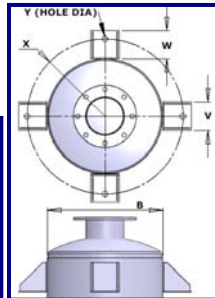
Stoddard Silencers, Inc.  
 1017 Progress Drive, Grayslake IL, 60030  
 Tel: (847) 223-8636 fax: (847) 223-8638  
 Web Page: www.stoddardsilencersinc.com  
 Engine division: www.stoddardenginesilencers.com

## Mounting Clips

Horizontal



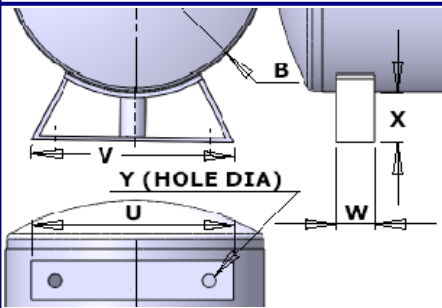
Vertical



PART NO.	B Shell Dia.	Y	W	V	U	WT. PER BRACKET
A14-101	Up to 18"	0.75	2.5	3	1.25	2
A14-102	20" to 26"	1	3	4	1.5	3.5
A14-103	30" to 48"	1.25	4	4	2	6
A14-104	54" to 72"	1.375	6	6	3	15

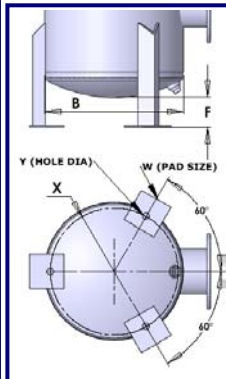
Other sizes available

## Horizontal Mounting Brackets



PART NO.	B	V	W	U	Y	X	WT. PER BRACKET
A12-101	12	10	3	6	1	3	5
A12-102	14	11.5	3	7	1	3	6
A12-103	16	13.125	3	9	1	4	6.5
A12-104	18	15	3	11	1	4	7
A12-105	20	15.75	3	12	1	4	8
A12-106	22	16.625	3	13	1	4	8.5
A12-107	24	17.75	3	13	1	4	9
A12-108	26	19.375	3	15	1	4	9.5
A12-109	30	21.5	3	17	1	4	11
A12-110	36	25.625	4	19	1.3	4	25
A12-111	42	29.125	4	23	1.3	4	28
A12-112	48	32.625	4	26	1.3	4	31

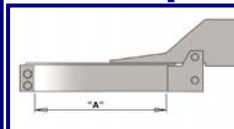
## Vertical Mounting Brackets



PART NO.	B Shell Dia.	Y	W	WT. PER BRACKET
A11-101	Up to 16"	0.875	4 x 4	3.5
A11-102	18" to 30"	1	5 x 5	6
A11-103	32" to 48"	1.25	6 x 6	11
A11-104	54" to 72"	1.375	7 x 7	32
A11-105	76" to 102"	1.375	9 x 9	70

Other sizes available

## Rain Caps



PART NO.	"A" NOM PIPE SIZE	WT. PER BRACKET
A23-107	4	1.5
A23-108	5	1.75
A23-109	6	6.5
A23-110	8	9
A23-111	10	10.5
A23-112	12	13.5
A23-113	14	15.5
A23-114	16	18
A23-115	18	20.5

Other sizes available

OTHER ACCESSORIES AVAILABLE UPON REQUEST.